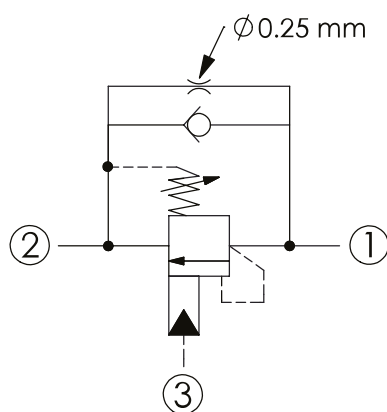


CCB-11A - Counterbalance valve

1 Available versions

Ordering example:

CCB-11A	-33	-H	-L	-02
Type	Pilot ratio	Spring	Option	



- 1 Load
- 2 Valve
- 3 Pilot

Pilot ratio


Coding	Description
33	3 : 1
3C	3 : 1 (with sealed pilot)

Spring

Coding	Pressure (bar)	Standard setting (bar)
Adjustment ranges (1.7 bar cracking pressure)		
H	70 - 280	210
I	25 - 105	70
Special purposes (0.3 bar cracking pressure)		
A	70 - 280	210
B	25 - 105	70
E	16 - 55	25

Option

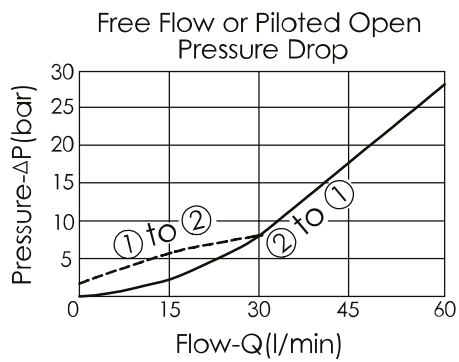
Coding	Option	Drawing
L	Leakproof hex. socket screw	
LP	Leakproof hex. socket screw, with stainless steel external metal components	

Coding	Option	Drawing
CA	Plastic tamper resistant cover	

2 Technical data

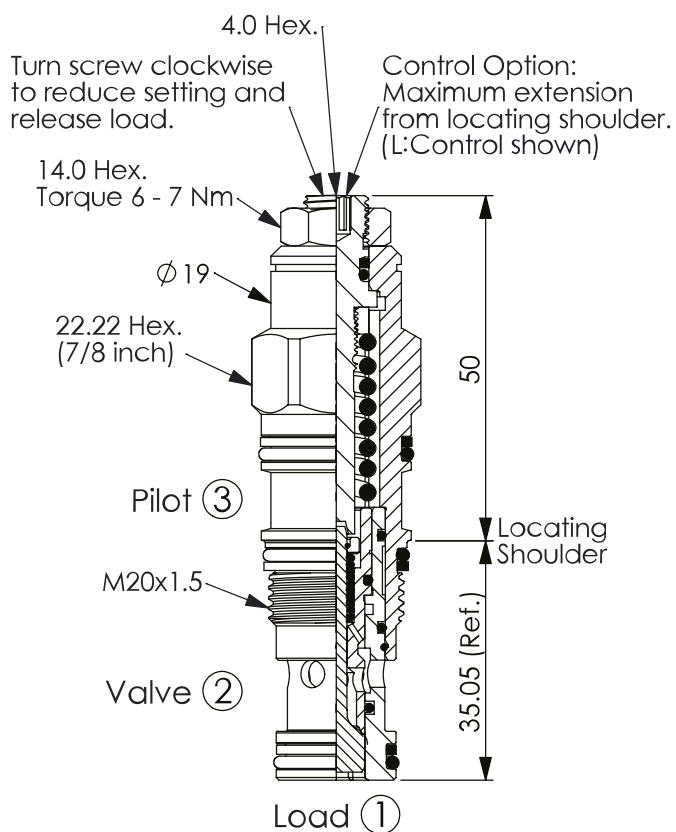
Operating pressure p_{max}	280 bar
Flow rate Q_{max}	60 l/min
Installation torque	40 - 50 Nm
Cavity	T-11A
Weight	L: 0.16 kg

Characteristic lines



3 Dimensions

All dimensions in mm, subject to change.



4 Other information

see Technical information HAWE cartridge valves: D 8219

see Recommendation for hydraulic fluid: D 5488/1

